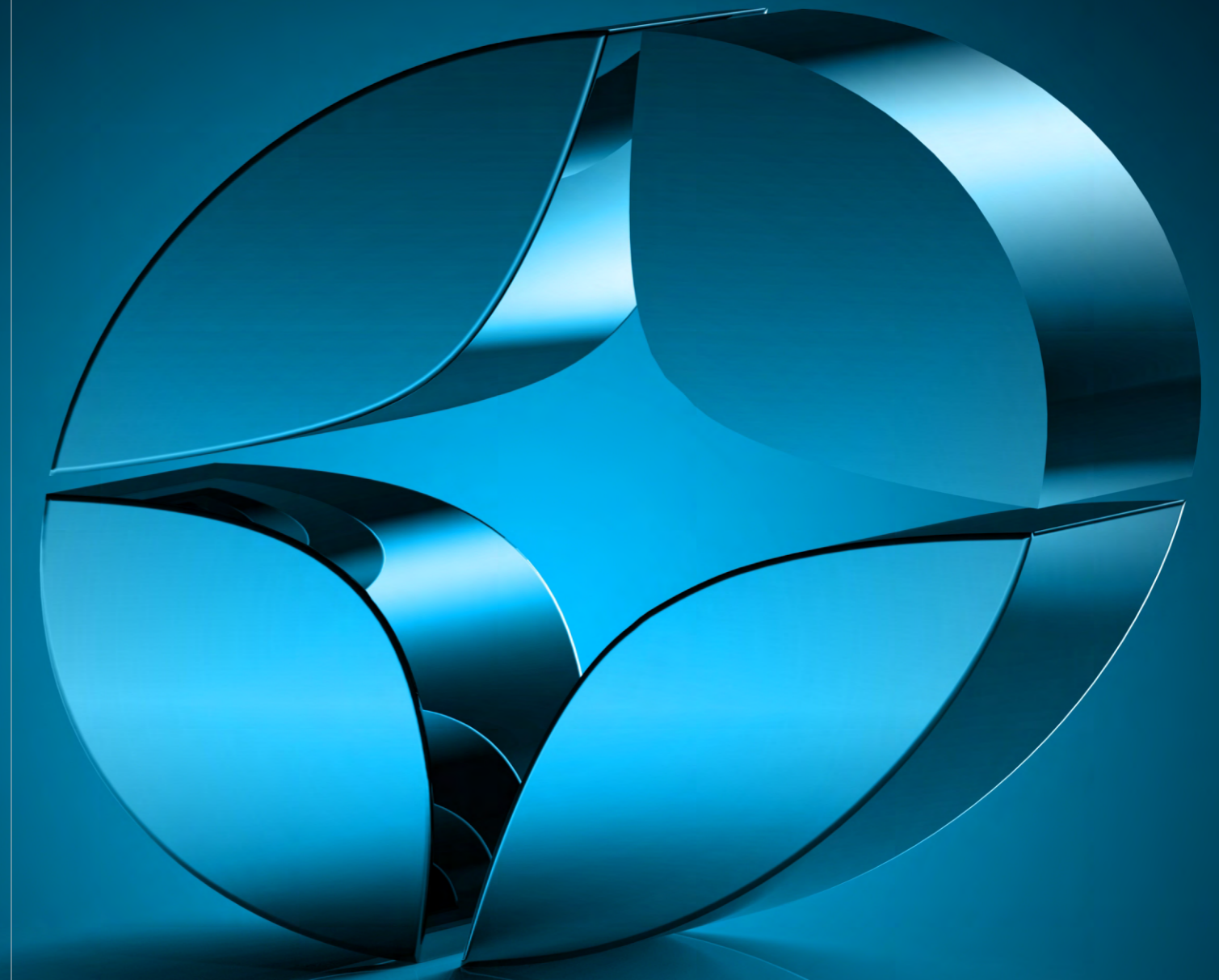


- + 本目录所述产品，因更新和改良，可能不经事先预告，而对产品之外观、规格和内容进行修改，特此声明敬请谅解。
- + The specification and / or appearances of the equipment described in the catalogue are subject to change because of modification without any previous notice.

# Suote 所特縫機

SUOTE SEWING MACHINE



## Suote 所特縫機

**浙江所特缝制机械有限公司**  
ZHEJIANG SUOTE SEWING MACHINE MECHANISM CO.,LTD.

地址：浙江省乐清市城东街道产业功能区永和二路7号

Add : No.7 Yonghe 2nd Road, Industry Functional Area, chengdong Street, Yueqing, zhejiang, China

电话/Tel : 0577-61381358 61380698 传真/Fax : 0577-61383937

E-mail : sales@chinasuot.com Http// : www.chinasuot.com



微信  
服务号

## 所特与您共创未来

SUOTE CREATE A BETTER FUTURE WITH YOU

www.chinasuot.com



# Enterprise Profile

## 企业简介

浙江所特缝纫机械有限公司位于温州乐清市，主要是以特种缝纫机的研发、生产、销售为一体的企业。

所特公司拥有全套CNC(加工中心)机壳柔性生产线、多台高精度车床磨床等一系列机壳，零配件生产设备。公司具备成熟的电脑系统研发部门和较强的技术生产能力，所有机器的零配件自主生产率达到90%以上。所特正因为零配件和电脑系统方面有如此高的研发生产能力，才能保证所特产品的品质在行业内一直处于较高的优势。

所特公司是国内较早生产电脑圆头锁眼机的企业，陆续研发出电脑平头锁眼机系列、电子套结/钉扣系列、花样机系列、模板机系列、双面尼暗缝机、697西装设备等系列产品。2014年公司扩大技术团队并与国内某知名高校合作，研发生产出8289高速电子单线绕脚钉扣机和896N/895全自动开袋机。产品进入市场，立刻博得国内外客户的青睐。2021年所特公司为扩大生产规模在湖北省天河机场临空经济开发区购置土地投资建设所特湖北分公司，为研发生产更多的产品服务于社会。

在未来的发展中，公司将继续弘扬“严谨求实开拓创新”的企业精神，致力于走新型工业化之路，坚持“用户第一、诚信经营”的方针，以市场为导向，努力提升产品档次，实施品牌化经营，深化内部改革，强化企业管理，坚持技术创新，力争让所特占据行业的每一阶新高点。

Zhejiang Suote Sewing Machine Mechanism CO.,Ltd locates in Yueqing,Wenzhou,specializing in R&D,manufacturing and selling special sewing machine.

The company has a series of machines producing Machine Covers and Spare Parts,including full set of CNC (MACHINING CENTER), Flexible Production Line, high precision grinders. It also has professional Computer Control System R&D Dept and excellent production capability. Over 90% spare parts are independently produced.Together with the excellent capability in R&D of spare parts and computer control system ensures Suote' s leading quality position in the filed.

Suote is one of earlier enterprises producing Electronic Eyelet Button Hole Machine series, followed by Electronic Lockstitch Button Hole Machine series, Electronic Bar Tacking/Electronic Button Sewing Machines series, Electronic Pattern Sewing Machines series, Intelligent Template Machine, Double Side Blind Stitch Sewing Machine, 697 Suit Equipment and so on. It successfully researching and developing High Speed Single Thread Chainstitch Button-Neck-Wrapping Machine (ST-8289) and Automatic Pocket Welting Machine(ST-896N/895) by expanding its technical team and cooperating with known colleges domestically in 2014.They gain the favour of customers as soon as they were entered into the market. In 2021,the company built Suote (Hubei) Branch to expand our production scale to serve the society by researching and developing more products.

The company will carry forward the spirit " Dilligence,Preciseness,Innovation" ,follow the path of New Industrialization,stick to policy as "Customer as first,Honest Management" and continue to be market-oriented. And we, strive to improve the quality level,carry out branding management,deepen internal reform,reinforce management,persistent in innovation,so to enable Suote to be at the high point at each stage.

浙江厂区



湖北厂区





■ **企业宗旨**

严谨求实 开拓创新

■ **企业使命**

让所有的所特人感受到企业的温暖  
让所有的所特客户和企业共同发展  
让所有的所特用户体会到所特的价值

■ **企业愿景**

做一流的企业，做一流的产品

■ **企业方针**

爱员工，重客户、保质量，求发展



PROCESS **PRECISION  
CASTING**

多道工序，精密铸造 + + + +

公司根据多年的实际经验，运用生产管理系统，引进多条先进的全自动生产线，严格高要求制造工序，生产高品质的产品。





# ST-896N / ST-895

## 全自动开袋机

Automatic Welting Machine



- 用于西裤、西装、休闲裤的平行袋（带袋盖）缝制。

The machine supports the sewing of straight pockets (with flaps) on suits, jackets and pants.

- 双嵌条和单嵌条的切换可以通过操作板的按键一键完成。

Double-/single-welt sewing can be changed over by the simple touch of a key on the operation panel.

- 扩大了缝制长度（最短18mm - 最大220mm）

Increased adjustable range of sewing lengths (min. 18mm to max. 220mm)



### 提升生产效率

#### Increased productivity

通过搭配可达到最快3000针/分钟，大压脚移动（空送、前送）等装置，实现循环缝制时间的缩短

In addition to the high-speed machine head with a maximum speed of 3,000 sti/min, faster movement (jump and forwarding) of the clamp foot achieves a shorter machine time.

无袋盖工序

1900 ~ 2300件/8小时

Welting process without flaps

1900 ~ 2300 pcs/8hours

有袋盖工序

1600 ~ 1900件/8小时

Welting process with flaps

1600 ~ 1900 pcs/8hours

### 角刀可轻松调节

#### The corner knives are easily adjustable

角刀整体采用抽屉式，使调整工作和切刀的更换变得简单易行。由于角刀盖子的细长化，减少了面料突出现象，提高了切刀切割的精准度。

The corner knives, which can be drawn out in the entire knife unit is adopted. The knives are easily adjusted and can also be changed with ease. The slim corner knife cover helps reduce material thrusting, thereby achieving material cutting with accuracy.





### 小型布料机械手

#### Newly developed stacker which is able to handle small articles

设置了夹紧式机械手，能用于口袋到布料端最短距离为250MM的面料缝制，配置了布料检测传感器。防止机器的误操作。

With the clamp bar stacker, the machine is able to handle materials with a shortest distance of 250 mm from its edge to the pocket. A stacking sensor is also provided as standard to prevent stacking errors.



### 吸风装置（左右分离型缝制台面用）

#### Suction device (for sewing tables with separated right and left parts)

配置吸风装置，通过吸住衣片提高面料平整性。

The device improves the ease of the material placement by sucking the garment body.



### 易读易用的大型彩色液晶操作盘

#### Highly-visible and easy-to-use large color LCD touch-panel

大型彩色液晶的图解显示和触屏式面板大大提高了操作的便利性。基本操作通过图示说明和象形按键执行。各种信息可通过所选定语言显示。

The graphic display and touch panel on the large color LCD help dramatically increase ease of use. Basic operations are carried out with the graphic screen and pictogram buttons. Guidance messages are given in your selected language.

通过USB对应各种储存卡：数据的读入写出，加上配置了USB接口，可以使用U盘以及USB读卡器，来使用各种储存卡（SD卡，mini SD卡等）

Now the USB-ready main body of the sewing machine uses many different kinds of media :

The memory storage capability of the main body of the sewing machine has been dramatically enhanced. Now the USB-ready main body of the sewing machine uses many different kinds of media. In addition to the Compact Flash card, the main body of the sewing machine is provided as standard with a USB connector. Now, data can be input/output to/from various kinds of media (SD (Secure Digital Card), CF (Compact Flash), SM (Smart Media) etc.) by means of a USB thumb device and a card reader.

### 规格参数

#### Specifications

型号 Model	ST-895	ST-896N
袋盖规格 Bag cover	平行袋盖 Parallel flap	平行、斜袋盖 Parallel and oblique flaps
缝制速度 Sewing speed	最快3,000针/分钟 (1,000~3,000针/分钟) Max. 3,000sti/min (1,000~3,000sti/min)	
开袋种类 Kind of welts	平行双嵌条Parallel double welt, 平行单嵌条Parallel single welt, (袋盖、无袋盖With/without flaps )	平行双嵌条Parallel double welt, 平行单嵌条parallel single welt, 斜双嵌条Slanted double welt, 斜单嵌条Slanted single welt, (袋盖、无袋盖With/without flaps)
针距长度 Stitch Length	标准2.5mm (2.0~3.4mm)	
缝制长度（固定缝） Stitch length (fastening stitching)	安全缝：标准1.0mm (0.5~1.5mm) Condensation stitching: Standard 1.0mm (0.5~1.5mm) 倒缝：标准2.0mm (0.5~3.0mm) Back-tack stitching: Standard 2.0mm (0.5~3.0mm) 可转换为安全缝/倒缝 Condensation / back-tack stitching	
角刀调整方式 Corner-knife cutting adjusting method	机械式调整 Mechanical adjustment	电子式调整 Electronic adjustment
使用针 Needle	ORGAN DP x 17 # 16 (#14 - #18)	
缝制花样数 Number of independent sewing patterns	99花样（使用CF卡可以达到999花样） 99 patterns (999 patterns when a CF memory card is used)	
循环花样数 Number of cycle sewing patterns	20花样 20 Patterns	
交互花样数 Number of alternate sewing patterns	20花样 20 Patterns	
使用机头 Machine head	双针平缝机 2-needle lockstitch machine	带停针功能的双针平缝机 2-needle, lockstitch machine with organized split needle bar
针幅 Needle gauge	8、10、12、14、16、18、20mm 22、24、26、28、30、32mm	8、10、12、14、16、18、20mm
操作盘支持的语言 Languages supported for operation panel	日文，英文，中文，西班牙文，意大利文，法文，德文，葡萄牙文，土耳其文，越南文，韩文，印尼文，俄文，日本語，English，中文简体及繁體，Español，Italiano，Français，Deutsch，Português，Türkçe，Việt nam，한국어，Indonesia，Русский	



# ST-8289

## 高速电子单线绕脚钉扣机

Computer-controlled, High-speed, Single-thread Chainstitch, Button-neck-wrapping Machine



在一台缝纫机上可进行平扣、柄扣、包扣、大小扣（子母扣）的缝制。  
This single machine can also sew flat buttons, shank buttons, marble buttons and stay buttons (counter buttons).



平扣 Flat button



柄扣 Shank button



大小扣(子母扣) Stay button(counter button)



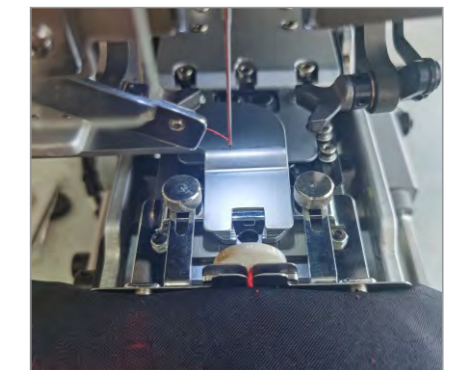
绕脚 Neck-wrapping



包扣 Marble button



绕脚 Neck-wrapping





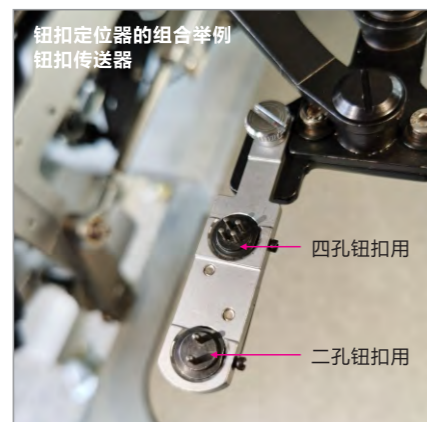
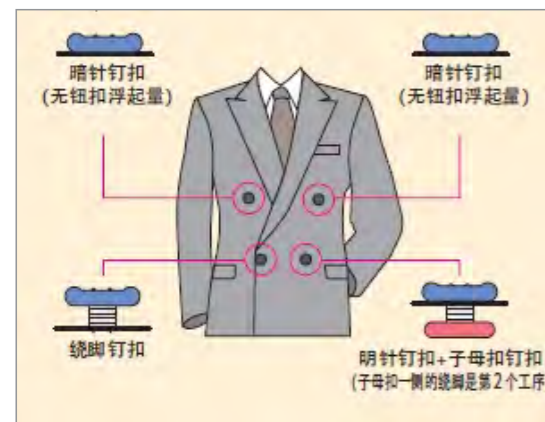
## 新型电子夹线器 (电子线张力装置) Exclusive active tension (electronic thread tension control system)

- 采用了新方式的电子夹线器。不仅提高了应答性能，还可根据布料的变化，设定细微的张力。  
The exclusive active tension system for ST-8289 further improves responsiveness and allows delicate tension setting when the user changes fabrics
- 对于钉扣时和绕脚时的张力设定可在操作面板上分别进行设定。  
Thread tensions for button sewing and neck wrapping can be separately set on the operation panel.
- 可储存每一个花样的缝制条件，并可再现。  
The machine stores sewing conditions in memory on a pattern-by-pattern basis. Required sewing conditions can be exactly reproduced for every pattern.



## 循环缝 Cycle sewing

- 对于像双排扣西装等这种不同的钉扣工序也可以进行连续缝制。  
The machine sews buttons on a double-breast suit, a garment that requires the sewing of different types of buttons, in a continuous manner.
- 在操作面板上可以显示缝制项目的图解，可进行循环缝数据的设定以及编辑。(钮扣的个数、地点、钉扣的顺序)  
Cycle sewing data can be set/edited with the sewing item graphically displayed on the operation panel (the number of buttons, button sewing locations, and sewing order of buttons).
- 钮扣传送器可根据循环缝提供2种不同的钮扣。  
The button loader can feed two types of buttons in a single sewing cycle.



## 操作性优良的彩色操作面板 The color panel provides excellent operability

- 操作面板采用的是彩色液晶的触摸面板方式。通过图解画面，我们可以一边确认显示内容，一边对缝制数据的设定进行变更。  
The operation panel is a touch-sensitive type LCD. The clear graphical displays make it much easier for the operator to set or modify sewing data.
- 可通过存储卡储存或者输送缝制数据，因此能在工厂内的缝纫机之间或者合作工厂之间简便地使用同一数据进行缝制。  
A CompactFlash™ card can be used to store and transfer sewing data. This makes it possible for sewing machines at one or more factories to share data. In addition to the CompactFlash™, the machine is provided as standard with a USB connector. As a result, the use of a USB flash drive or card reader enables the storage and transmission of sewing data by means of various kinds of media (such as a floppy disk, SmartMedia, CompactFlash and SD card) to enable sewing using the same sewing data among sewing machines in a plant or among subcontract plants.



## 规格参数 Specifications

型号 Model	ST-8289	
缝制形式 Stitch type	单线缝制 Single-thread chain stitch	
缝制速度 Sewing speed	最高缝制速度 Max. sewing speed	1,800针/分钟 (绕脚), 1,200针/分钟 (钉扣) 1,800sti/min (neck-wrapping), 1,200sti/min (button sewing)
	一般缝制速度 Normal sewing speed	1,500针/分钟 (绕脚), 1,000针/分钟 (钉扣) 1,500sti/min (neck-wrapping), 1,000sti/min (button sewing)
用途 Application	各种钉扣缝制 Sewing of various button types	
纽扣尺寸 Button size	明针钉扣: φ8~φ38mm 绕脚缝: φ8~φ32mm 子母扣: φ8~φ25mm Sewing button without neck-wrapping : φ8~φ38mm Sewing button with neck-wrapping : φ8~φ32mm Counter button : φ8~φ25mm	
基本形状设定范围 Display screen for setting basic shape-setting	纽扣孔间隔: 1.5~6.0mm (0.1mm单位) 绕脚高度: 0, 1.5~10.0mm (0.1mm单位) 交叉缝数: 2~64 (2单位) Distance between buttonholes: 1.5~6.0mm (in increments of 0.1mm) Height of neck-wrap: 0, 1.5~10.0mm (in increments of 0.1mm) Number of cross-over stitches: 2~64 (in increments of 2)	
可记忆花样数 Number of data that can be input	最多99花样 Max. 99 patterns	
=循环花样数 Number of cycle stitch patterns	登峰花样数: 20 (1个循环30个花样) The number of registered patterns: 20 (30 patterns for one cycle)	
操作盘支持的语言 Languages supported for operation panel	日文, 英文, 中文, 西班牙语, 意大利文, 法文, 德文, 葡萄牙文, 土耳其文, 越南文, 韩文, 印尼文, 俄文, 日本語, English, 中文简体 and 繁體, Español, Italiano, Français, Deutsch, Português, Türkçe, Việt nam, 한국어, Indonesia, Русский	



# ST-4030A/8050A/1280A

## 智能模板机

Intelligent Template Machine



- 完全按照缝制数据进行美观缝纫  
Sewing data is sewin faithfully and attractively
- 高速缝纫  
High speed sewing



### 规格参数 Specifications

型号 Model	ST-4030A	ST-8050A	ST-1280A
缝制范围 Sewing area	400X300mm	800X500mm	1200X800mm
使用缝纫机 Sewing machine	智能模板机 (3倍旋梭) Lock stitch pattern tacking sewing machine		
线迹 Stitch form	单针平缝 Single needle lock stitch		
最高缝纫速度 Max.sewing speed	2700针/分钟 2700 sti/min		
送布装置 Feed mechanism	间歇送布 (脉冲马达驱动) Intermittent feed (pluse motor dirve)		
针距 Stitch length	0.05-12.7 mm		
最大针数 Max.number of stitches	20000 针/图案 20000 stitches per pattern		
间歇压脚上升量 Height of stepping presser foot	22 mm		
间歇压脚行程 Stepping presser foot stroke	0或2-10mm (出厂设置3mm) 0 or 2-10mm (factory setting: 3mm)		
旋梭 Hook	旋梭 (标准旋梭是选配件) Double-capacity shuttle hook (standard capacity hook: option)		
切线装置 Thread trimmer	标准装备 Standard equipment		
数据存储方式 Data storage media	USB		
马达 Motor	AC伺服马达750W AC servo motor 750W		
气压 Air pressure / consumption	0.5 Mpa 1.7 L/min		



# ST-8326G-06

## 全自动橡筋拼接机

Automatic Elastic Stitching Machine



- 适用于多种规格橡筋拼接工艺，线迹平整美观  
Apply to multiple specification rubber jointing, sewing lines smooth and beautiful
- 超大触控彩屏，操作方便  
Touch screen panel, easy to operate
- 先进装置，对料齐整  
Advance device, nest side



### LOGO定位功能 Logo Sensor

通过颜色定位系统，可精确定位单个、多个logo位置，同时具有绝佳性价比  
Through different color to positioning single logo, multi-logos which has best cost performance



### 定型/送料装置 Shape and feeding device

采用重力原理，使橡筋带自动垂直定型，去除原材料折印，使成品更加美观，同时更有加热预缩功能。  
Adopting gravity theory makes elastic vertical shapping and remove folding mark, meanwhile, it had heating and preshrunk function.



### 自动过结头功能/自动计长度功能（误差不超过2毫米） Joint sensor / Automatic length measurement (error within 2mm)

橡筋带采用订书针、胶带连接时可自动感应，自动排除，可节省材料，节省人工，同时对切刀机头有保护作用。  
误差不得超过2毫米，有效提高了良品率。  
Elastic is always used staple or tape for the joint, when the joint goes through the sensor, machine will cut the joint and go on working. Error with 2mm, improving the quality of good product.



### 收料功能 Elastic collection

可根据需要设定每捆数量，自动收料，非常方便，节省时间，提高效率。  
You can set the quantity for every rod by yourself.



### 缺料自动停车 Automatic stop for lack of material

在连续循环缝纫过程中遇到橡筋带有接头或者橡筋带用时，机器会自动停止工作。  
The machine will stop automatically once the elastic ribbon has a joint or is depleted during continuous cycle sewing.

## 规格参数 Specifications

型号Model	ST-8326G-06
线迹 Line	单针平缝 single needle stitch
最高缝纫速度 Max.sweing speed	2800 rmp
叠接后尺寸 Finished elastic diameter scope	100mm - 999mm
缝制区域 Sewing area	MAX 8×60mm
送布装置 Feed mechanism	间歇送布（脉冲马达驱动） Intermittent feed (pluse motor dirive)
针距长度 Stitch length	0.05-12.7mm
最大针数 Max. Needle number	20000 针/图案 20000 stitches per pattern
压脚高度 Work clamp height	最大 Max.25mm
间歇压脚上升量 Height of stepping presser foot	22 mm
间歇压脚行程 Stepping presser foot stroke	0或2-10mm（出厂设置3mm） 0 or 2-10mm (factory setting: 3mm)
用户程序数 Customer program amount	50
循环程序数 Recyle program number	9
马达 Motor	AC伺服马达550W AC servo motor 550W



# ST-9820

## 电脑圆头锁眼机

Electronic Eyelet Button Holer



### 线迹美观

Fine stitches are available

ST-9820-01

ST-9820-02





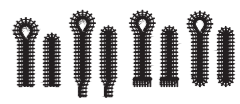
### 操作简便的操作盘

Operation panel easy to use for everyone



### 规格参数

Specifications ST-9820-□□

规格 Specifications		-00	-01	-02	
				L2230	L1826
剪线装置 Thread Trimmer	面线剪线装置 Upper thread trimmer	长线剪线 Long thread cut	长线剪线 Long thread cut	短线剪线 Short thread cut	
	底线剪线装置 Lower thread trimmer	无 None	长线剪线 Long thread cut	短线剪线 Short thread cut	
主要用途 Main applications		女装 Ladies' wear	男装, 休闲装 Men' s wear, Casual wear	牛仔裤 Jeans	牛仔裤, 裤装 Jeans, Trousers
其它用途 Other applications		男装, 休闲装, 牛仔裤, 裤装 Men' s wear, Casual wear, Jeans, Trousers	女装, 牛仔裤, 裤装 Ladies' wear, Jeans, Trousers		
功能 Features		剪线装置仅剪切西线。 可缝纫最长为50mm的扣眼。 Buttonholes up to 50mm long can be sewn	剪线装置将较长地剪切所有线头。在缝纫持续过程中可在更长距离内安全把握线尾。很适合要求精确剪切线头或手动剪线的情况。 All the threads are cut long by the thread trimmers. The long thread ends can be securely held in the subsequent process. It is suitable for cases that require accurate short end or manual trimming.	剪线装置将较短地剪切线头, 这样可省去手动剪线的麻烦和降低耗线量。 All the threads are cut short by the thread trimmers. This saves the trouble of manual trimming and reduces consumption of the thread.	
缝纫形状 Sewing shape					
缝纫长度 Sewing length		圆头锁眼: 8-50mm 直形钮孔: 5-50mm Eyelet buttonhole: 8-50mm Straight buttonhole: 5-50mm	圆头锁眼: 8-42mm 直形钮孔: 5-42mm Eyelet buttonhole: 8-42mm Straight buttonhole: 5-42mm	22-30 mm L1422 (14-22mm) L1826 (18-26mm) L2634 (26-34mm) L3442 (34-42mm)	18-26 mm L1422 (14-22mm) L1826 (18-26mm) L2634 (26-34mm) L3442 (34-42mm)
缝纫速度 Sewing speed		1,000-2,500针/分钟, 1,000 - 2,500 sti/min			
压布夹高度 Height of work clamp		标准为12mm (可以到16mm为止) 12 mm as standard (Available up to 16 mm)			16 mm
机针 Needle		DO x 558-NY2 #14 ~ #18(风琴) D0x558 Nm80 - Nm120 (SCHMETZ)			
操作盘支持的语言 Languages supported for operation panel		日文, 英文, 中文, 西班牙语, 意大利文, 法文, 德文, 葡萄牙文, 土耳其文, 越南文, 印尼文, 俄文 日本語 English, 中文, Español, Italiano, Français, Deutsch, Português, Türkçe, Việt nam, Indonesia, Русский			
上轴马达 Upper shaft motor		AC伺服马达550W AC servo motor 550W			
空气压力 Air pressure		主调整器: 0.5 Mpa 锤压调整器: 0.4 MPa Main regulator: 0.5 Mpa, Hammer pressure regulator: 0.4 Mpa			
电源 / 耗电量 Power supply		单相100V/200V, 二相200V/220V/3 80V/400V, 400VA Single phase 100V/200V, 3-phase 200V/220V/380V/400V, 400VA			



# ST-1790

## 电脑平头锁眼机

Electronic lockstitch button hole sewing machine



- 新颖的外观设计（机械、电控一体式设计）  
Mechanical and electronic control integrated design
- 多功能触摸屏操作面板  
Multifunction touching screen
- 无油污清洁缝纫  
Oil-free clean sewing
- 新型的针摆机构，使噪音更低，调节更加方便  
New needle sewing mechanism makes the noise lower and the adjustment easier

### 规格参数 Specifications

型号 Model	ST-1790	ST-1790L
主要用途 Application	标准型 Standard type	加长型 Long type
操作屏 Operation panel	触摸屏 Touch screen	
最高缝纫速度 Max.sewing speed	4,200 针/分钟 4,200 sti/min	
切刀尺寸 Size of cutter	6.4 - 31.8mm (1/4" - 1 1/4")	
套结宽度 Width of bartack	最大5mm The maximum 5mm	
锁眼缝长度 Length of keyhole	最大41mm The maximum 41mm	
机针 Needle		
压脚提升量 Rising volume of foot presser	14mm	
自动抬压脚装置 Automatic lifting and pressing foot device	标准装备（脉冲式马达）Standard equipment (pluse motor type)	
切刀驱动方式 Drive mode of cutter	电机驱动 Motor drive	
标准花样数 Number of standard pattern	31个花样 31 pattern	
可记忆花样数 Number of memorable pattern	最大99个花样 99 pattern at most	

### 标准缝制图案一览表 Standard sewing pattern list

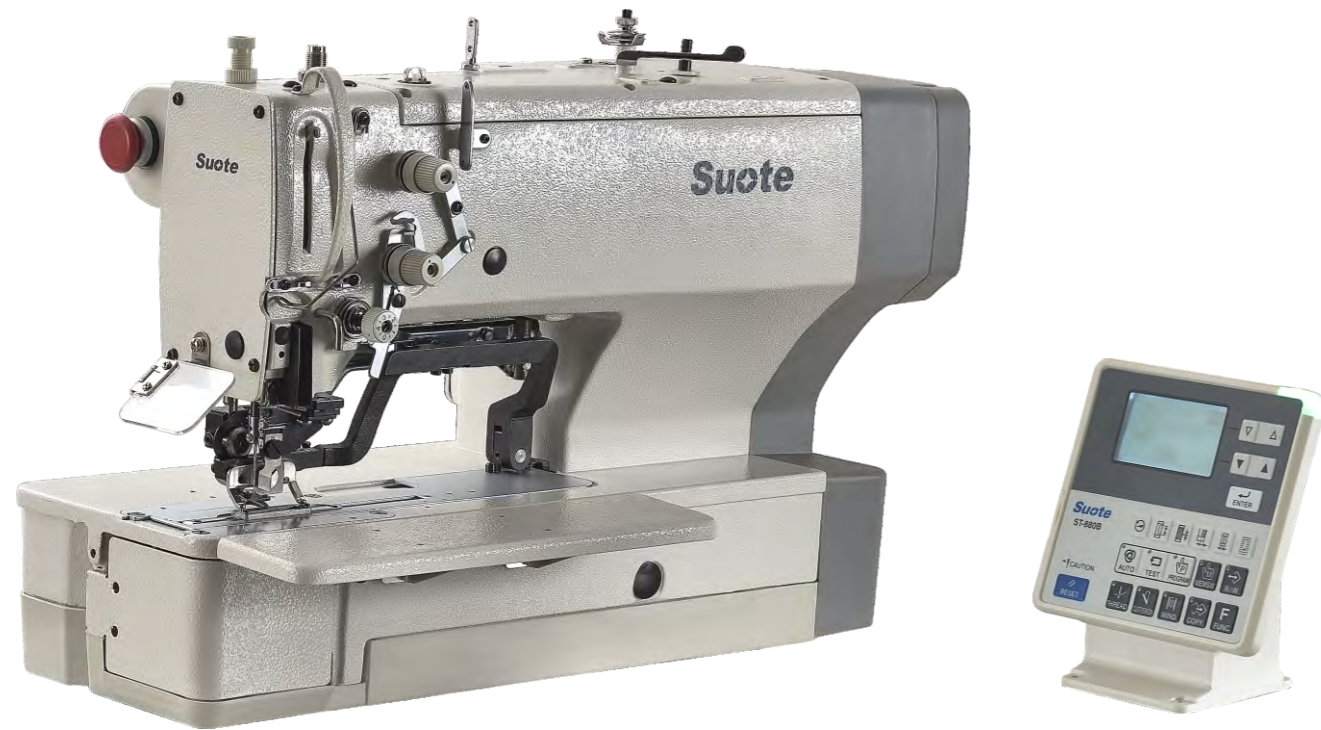
角型 Square	圆型 Round	放射角型 Radial square	放射型 Radial	放射直线型套结 Radial straight bartacking	放射长尾型套结 Radial taper bartacking	圆头角型 Eyelet square	圆头放射型 Eyelet radial	圆头直线型套结 Eyelet straight bartacking	圆头长尾型套结 Eyelet taper bartacking	半月型 Semilunar
圆角型 Round saugre	半月角型 Semilunar square	半月直线型套结 Semilunar straight bartacking	半月长尾型套结 Semilunar taper bartacking	圆头半月型 Eyelet semilunar	圆头型 Eyelet round	角放射型 Square radial	角半月型 Square semilunar	角圆型 Square round	角直线型套结 Square straight bartacking	角长尾型套结 Square taper bartacking
放射半月型 Radial semilunar	放射圆型 Radial round	半月放射型 Semilunar radial	半月圆型 Semilunar round	套结缝 Bartacking	套结右切断 Bartacking, right cut	套结左切断 Bartacking, left cut	套结中央切断 Bartacking, center cut	下缝+切刀 Basting stitch+knife		



# ST-880B

## 电脑平头锁眼机

Electronic lockstitch button hole sewing machine



- 美观的缝纫效果  
Perfect sewing finishes
- 操作舒适  
Operator-friendly
- 提高生产效率  
High productivity

采用了能把友情达的动和传输损耗控制在最小的直驱方式，因此提高了生产效率，最大扣眼长度可7cm。  
High productivity has been realized with direct drive system which minimizes the power transmission loss of the motor.

### 规格参数 Specifications

型号 Model	ST-880B-02	ST-880B-03
主要用途 Application	梭织产品扣眼用 (衬衫、女士衬衫、工作服、女士服装等) Woven articles such as shirts, blouses, Work clothes and ladies' attire	针织产品扣眼用 (针织内衣、毛衣、毛衣开衫、运动衫等) Knitted article such as underwear, sweaters, cardigans and jerseys
最高缝纫速度 Max. sewing speed	4,000 针/分钟 4,000 sti/min	
针摆驱动方式 Zigzag mechanism	脉冲马达驱动 Pulse motor	
送布驱动方式 Feed mechanism	脉冲马达驱动 Pulse motor	
抬压脚驱动方式 Work clamp lifter mechanism	脉冲马达驱动 Pulse motor	
抬压脚高度 Height of work clamp	最大13mm(可任意设定) Max.13mm(adjustable)	
切刀驱动方式 Cutter drive method	双向电磁铁驱动 Double position solenoid	
下夹线装置 Lower thread holding device	标准配置 Standard equipment	
梭芯压脚装置 Bobbin presser	标准配置 Standard equipment	
标准缝制图案 Standard pattern shapes	21种 21 types	
存储图案数 NO. of standard sewing pattern	50	
最大针数/1个程序 Max. NO. of stitch/program	999针 999 stitches(overall cycle program stitch no. 3,000 stitches)	
机针 Needle	-2	-3
	蓝狮 134 Nm90 Schmetz 134 Nm90	蓝狮 134 Nm75 Schmetz 134 Nm75
数据存储方式 Data storage method	USB	
电源 Power supply	单相100V/220V,三相220V/380V/400V Single-phase 100V/220V, 3-phase 220V/380V/400V (For single-phase 100V and 3-phase 380V/400V, the trans box is required)	

### 标准缝制图案一览表 Standard sewing pattern list

矩形 Rectangle	辐射形 Radial	圆形 Round	线形套结 Straight bar tack	辐射矩形 Radial-rectangle	圆方形 Round-rectangle	圆头孔矩形 Eyelet-rectangle	辐射锥套结形 Radial-taper tack	圆锥套结形 Round-taper tack	圆头孔圆锥套结形 Eyelet-taper tack	方直线套结形 Rectangle-tack
方辐射形 Rectangle-radial	圆辐射形 Round-radial	圆头孔辐射形 Eyelet-radial	方圆形 Rectangle-round	辐射圆形 Radial-round	圆头孔圆形 Eyelet-round	方锥套结形 Rectangle-taper tack	辐射直线套结形 Radial-tack	圆直线套结形 Round-tack	圆头孔直线套结形 Eyelet-tack	



# ST-8430D/ST-8438D

## 电子套结机/电子钉扣机

Electronic Direct Drive Bar Tacker/ Electronic Direct Drive Button Sewer



### 易于使用的操作面板

#### User-friendly Operation Panel

采用易于面板输入的设计方式，不仅显示一目了然，使用上也更得心应手。可简单地在程序上编辑缝制图案、倍率、缝制速度等数据。  
The operation panel is designed to be user-friendly and to improve the ease of operation. Sewing patterns and sewing speed can be memorized as user programs.



从缝制薄料到中厚料，厚料，都能保证稳定的线迹和切线性能。

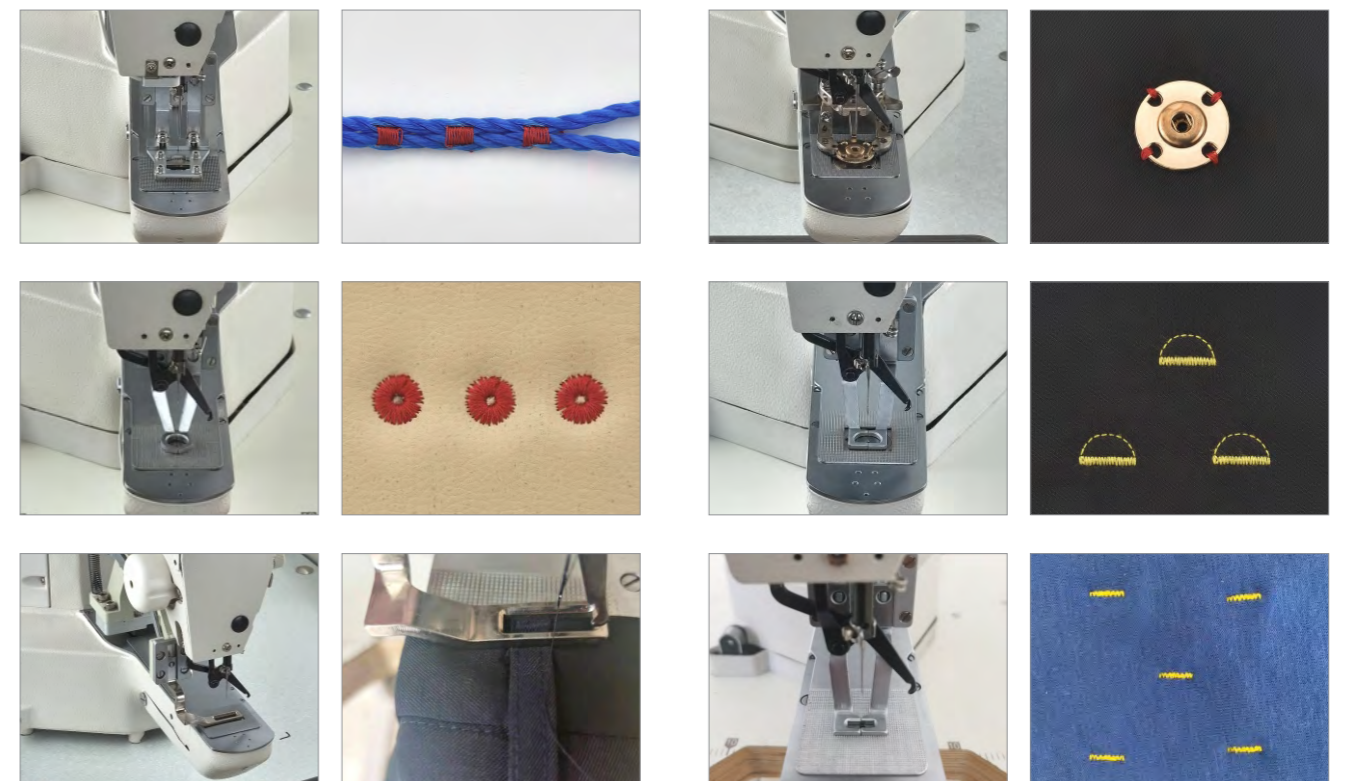
Stable thread tightening and thread trimmer when sewing from light materials to medium materials and heavy materials.

- 循环时间快，生产效率具有明显优势。  
Overwhelmingly superior productivity with the world's fastest cycle time.
- 完全按照缝制数据进行高质量缝纫。  
High quality sewing faithfully following the sewing data.
- 实现了低张力缝制和广泛的可缝性能  
Realization of wide ranging sewing capabilities and low tension sewing
- 切线后无需进行再处理  
Follow-up processing unnecessary after thread trimming.
- 可防止缝纫开始时易出现的脱线、鸟巢状及缝线污迹。  
Prevents thread cast-off, bird's nests, and Stains on the thread at the beginning of the sewing operation.
- 清洁缝制，强大的机针贯穿力，采用CF卡  
Clean sewing, powerful needle penetration force, adoption of compact flash cards.
- 低噪音、低振动、电耗低、经济实用  
Low noise and low vibration, because of its low power consumption, it is economical.
- 缝制区域40x30mm。  
Sewing area 40\*30mm.



### 可选购部件

#### Option Parts





**规格参数**  
Specifications

ST-8430D-□□/ST-8438D

型号 Model	ST-8430D						ST-8438D
用途 Application	01	02	05	06	07	XT	
	中厚料 Medium material	厚料 Heavy material	裤攀 Belt loop	橡筋拼接 Elastic stitch	针织料 Knitted materials	吸线头 Thread Suction	钉扣机 Button Sewing
线迹样式 Stitch formation	单针平缝 Single needle lockstitch						
最高缝纫速度 Max.Sewing speed	3200针/分钟 3200 sti/min						2700 针/分钟 2700 sti/min
缝制范围 (X-Y) Sewing area (X-Y)	最大40*30mm Max.40*30mm		最大40*40mm Max.40*40mm		最大40*30mm Max.40*30mm		最大6.4*6.4mm Max.6.4*6.4mm
可缝纽扣的尺寸 Dimensions of buttons that can be sewn	---						外径8-30mm Outer diameter of button 8-30mm
送布方式 Feed mechanism	Y-θ间歇送布 (脉冲马达驱动方式) Y-θ intermittent feed mechanism (pulse-motor driven mechanism)						
针距 Stitch length	0.05-12.7mm						0.05 - 6.4mm
最大针数 Max.No.of stitches	210,000针 (包括增加针数200,000针) 210,000 stitches(including 200,000 stitches which can be added)						
抬压脚驱动方式 Work clamp lifter	脉冲马达驱动方式 Pulse motor drive system						
压脚上升量/纽扣夹上升量 Work clamp height/ Button clamp height	最大17mm 17 mm Max.						最大13mm 13 mm Max.
使用旋梭 Rotary hook	半回转标准梭 Shuttle hook						
扫线装置 Thread wiper drive	标准装备 Standard equipment						
切线装置 Thread trimmer drive	标准装备 Standard equipment						
数据存储方式 Data storage method	闪存卡 (使用CF卡可追加任意图案) Flash memory (any sewing pattern can be added using CF card)						
用户程序数 Number of user program	50						
循环程序数 Number of cycle program	50						
存储数据数 Number of stored data	已设置89种图案 89 sewing patterns are set already						已设置49种图案 49 sewing patterns are set already
	最多可增加200种图案, 追加总针数在200,000针以内 (Up to 200 patterns can be added, Total number of stitches of stored data which can be added is within 200,000)						
马达 Motor	AC伺服马达550W AC servo motor 550w						
电源 Power Source	单相100V/220V、3相200V/220V/380V/400V 400VA Single Phase 100V/220V、Three Phase 200V/220V/380V/400V 400VA						

# ST-8430D-XT

## 电脑吸线头打结机

Electronic Thread Trimmer Bar Tacker

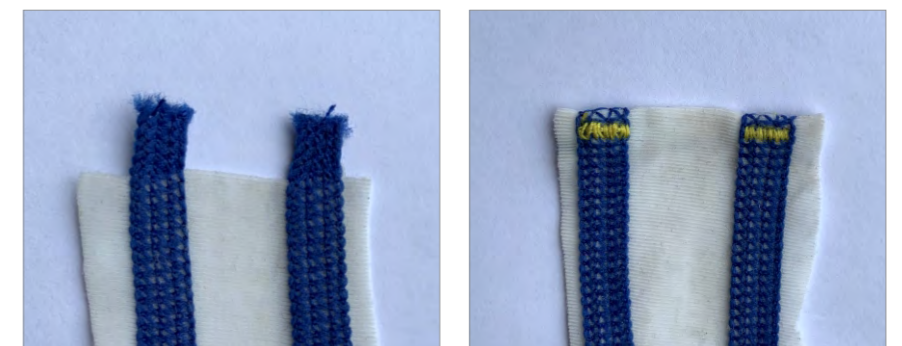


### 易于使用的操作面板

#### User-friendly Operation Panel

采用易于面板输入的设计方式, 不仅显示一目了然, 使用上也更得心应手。可简单地在程序上编辑缝制图案、倍率、缝制速度等数据。

The operation panel is designed to be user-friendly and to improve the ease of operation. Sewing patterns and sewing speed can be memorized as user programs.





# ST-8430D(4×6)

## 小范围花样机

Small Size Electronic Pattern Sewing Machine



- 基于ST-8430D电子套结机基础上开发的小范围花样机，最高转速达到3200转每分钟  
Small Size Electronic Pattern Sewing Machine' s max sewing speed is 3200rpm
- 最大缝制范围：X-60mm, Y-40MM  
Max sewing area is X-60mm, Y-40mm



### 规格参数

#### Specifications

型号 Model	ST-8430D(6X4)
线迹样式 Stitch formation	单针平缝 Single needle lockstitch
针距 Stitch length	0.05-12.7mm
最大针数 Max.No.of stitches	210,000针 (包括增加针数200,000针) 210,000 stitches(including 200,000 stitches which can be added)
压脚上升量/纽扣夹上升量 Work clamp height/Button clamp height	最大 17mm 17 mm Max.
使用旋梭 Rotary hook	半回转标准梭 Shuttle hook
数据存储方式 Data storage method	闪存卡 (使用CF卡可追加任意图案) Flash memory (any sewing pattern can be added using CF card)
用户程序数 Number of user program	50
循环程序数 Number of cycle program	50
存储数据数 Number of stored data	已设置89种图案 89 sewing patterns are set already
马达 Motor	AC伺服马达550W AC servo motor 550w

# ST-8430D-06

## 电脑橡筋拼接机

Electronic Elastic Ribbon Splicing Machine



- 基于ST-8430D电子套结机基础上开发的电脑橡筋拼接机，最高转速达到3200转每分钟，让缝制效率得到极大的提升  
Electronic Elastic Ribbon Splicing Machine' s max sewing speed is 3200rpm
- 最大缝制橡筋范围：X-40mm, Y-40MM, 适用于大部分面料对于橡筋的需求。  
Max sewing area is X-40mm, Y-40mm, it is suitable for most of the elastic' s requirement.



### 规格参数

#### Specifications

型号 Model	ST-8430D-06
线迹样式 Stitch formation	单针平缝 Single needle lockstitch
针距 Stitch length	0.05-12.7mm
最大针数 Max.No.of stitches	210,000针 (包括增加针数200,000针) 210,000 stitches(including 200,000 stitches which can be added)
压脚上升量/纽扣夹上升量 Work clamp height/Button clamp height	最大 17mm 17 mm Max.
使用旋梭 Rotary hook	半回转标准梭 Shuttle hook
数据存储方式 Data storage method	闪存卡 (使用CF卡可追加任意图案) Flash memory (any sewing pattern can be added using CF card)
用户程序数 Number of user program	50
循环程序数 Number of cycle program	50
存储数据数 Number of stored data	已设置89种图案 89 sewing patterns are set already
马达 Motor	AC伺服马达550W AC servo motor 550w



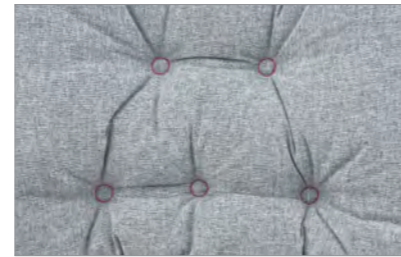
# ST-8430D-BZ

## 抱枕专用机

Pillow Sewing Machine



- 本产品主要用于抱枕，玩具等产品的装饰、加固作用。  
This machine is special for sewing pillow, toy and so on.
- 最大压脚上升量达到了50mm。  
The max work clamp height is 50mm



### 规格参数

#### Specifications

型号 Model	ST-8430D-BZ
线迹样式 Stitch formation	单针平缝 Single needle lockstitch
针距 Stitch length	0.05-12.7mm
最大针数 Max.No.of stitches	210,000针 (包括增加针数200,000针) 210,000 stitches(including 200,000 stitches which can be added)
压脚上升量/纽扣夹上升量 Work clamp height/Button clamp height	最大 50mm 50 mm Max.
使用旋梭 Rotary hook	半回转标准梭 Shuttle hook
数据存储方式 Data storage method	闪存卡 (使用CF卡可追加任意图案) Flash memory (any sewing pattern can be added using CF card)
用户程序数 Number of user program	50
循环程序数 Number of cycle program	50
存储数据数 Number of stored data	已设置89种图案 89 sewing patterns are set already
马达 Motor	AC伺服马达550W AC servo motor 550w

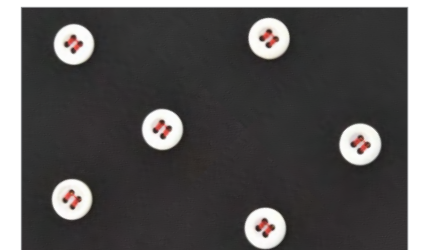
# ST-8438D-868

## 电脑自动送扣钉扣机

Electronic Automatic Button Feeder Machine



- ST-8468D-868自动送扣机，完善兼容ST-8438D电子钉扣机，取代人工送扣的工序，让钉扣效率大幅提升，钮扣达到28钮扣/分钟  
ST-8438D-868 Automatic button feeding machine can instead of manual button feed, every minute can sewing 28 buttons.
- 自动/手动喂料装置  
Automatic / manual button feeding
- 钮扣传送调整装置  
Button transfer adjustment device
- 可配置平扣、按扣、立扣  
Can use for flat button, Snap Button, Shank Button



### 规格参数

#### Specifications

型号 Model	ST-8438D-868
线迹样式 Stitch formation	单针平缝 Single needle lockstitch
最高缝纫速度 Max.Sewing speed	2700 针/分钟 2700 sti/min
缝制范围 (X-Y) Sewing area (X-Y)	最大6.4*6.4mm Max.6.4*6.4mm
可缝纽扣的尺寸 Dimensions of buttons that can be sewn	外径 8-30mm Outer diameter of button 8-30mm
针距 Stitch length	0.05 - 6.4mm
压脚上升量/纽扣夹上升量 Work clamp height/Button clamp height	最大 13mm 13 mm Max.
数据存储方式 Data storage method	闪存卡 (使用CF卡可追加任意图案) Flash memory (any sewing pattern can be added using CF card)
用户程序数 Number of user program	50
循环程序数 Number of cycle program	50
存储数据数 Number of stored data	已设置49种图案 49 sewing patterns are set already
马达 Motor	AC伺服马达550W AC servo motor 550w



# ST-8430FX

## 电子套结机

Electronic Direct Drive Bar Tacker



- 线迹美观且易调整  
Beautiful sewing and easy to adjust sewing function
- 通过电子夹线器来实现切实的缝制品质量管理  
Stable sewing quality with digital tension
- 无噪音及低振动性使设备易于操作  
Low noise and vibration for operator-friendly sewing
- 高循环速度，使得生产效率大大提高  
Overwhelmingly superior productivity with the fast cycle time

- 高节能性  
High energy saving
- 易于维修保养  
Easy maintenance
- 以微油设计方式实现清洁缝制  
Clean sewing with semi-dry type
- 提高面板的操作性  
User-friendly operation panel

### 规格参数 Specifications

型号MODEL	ST-8430FX	
用途 Application	03	05
	中厚料 Medium material	厚料 Heavy material
线迹样式 Stitch formation	单针平缝 Single needle lockstitch	
最高缝纫速度 Max.Sewing speed	3200针/分钟 3200 sti/min	
缝制范围 (X-Y) Sewing area (X-Y)	最大 40*30mm Max.40*30mm	
送布方式 Feed mechanism	Y-θ间歇送布 (脉冲马达驱动方式) Y-θ intermittent feed mechanism (pulse-motor driven mechanism)	
针距 Stitch length	0.05-12.7mm	
最大针数 Max.No.of stitches	5,000针/图案 5,000 stitches per pattern	
抬压脚驱动方式 Work clamp lifter	脉冲马达驱动方式 Pulse motor drive system	
压脚上升量/纽扣夹上升量 Work clamp height/Button clamp height	最大 17mm 17 mm Max.	
使用旋梭 Rotary hook	半回转标准梭 Shuttle hook	
扫线装置 Thread wiper drive	标准装备 Standard equipment	
切线装置 Thread trimmer drive	标准装备 Standard equipment	
数据存储方式 Data storage method	USB	
循环程序数 Number of cycle program	50	
存储数据数 Number of stored data	已设置89种图案 89 sewing patterns are set already	
	最多可增加512种图案，追加总针数在500,000针以内 (Up to 512 patterns can be added, Total number of stitches of stored data which can be added is within 500,000)	
马达 Motor	AC伺服马达550W AC servo motor 550w	
电源 Power Source	单相 100V/220V、三相200V/220V/380V/400V 400VA Single Phase 100V/220V、Three Phase 200V/220V/380V/400V 400VA	



# ST-6040

## 电子花样机

Electronic Pattern Sewing Machine



- 伺服驱动 ( X,Y采用伺服驱动, 使线迹更美观、低噪音、低振动 )  
Servo motor drive ( Better stitch lines, lower noise and lower vibration generated by servo motor in X,Y direction )
- 断线感应器 ( 用于感应断线, 检测到断线时缝纫操作将自动停止 )  
Thread-broken detector ( used to detect broken-thread, which stops the machines as soon as it detects broken line )
- 600X400mm的超大缝制范围, 适用于箱包/安全气囊/服饰等的大花样  
Big sewing area is 600X400mm, use for big pattern material such as bags / air bags / clothes.

### 规格参数 Specifications

型号 Model	ST-6040
缝制范围 (X*Y)Sewing area(X*Y)	600X400MM
线迹 Stitch form	单针平缝 Single needle lock stitch
最大缝纫速度 Max.sewing speed	2,800 针/分钟 2,800 sti/min
送布装置 Feed mechanism	间歇送布 ( 脉冲马达驱动 ) Intermittent feed ( pulse motor drive)
针距 Stitch length	0.05 - 12.7mm
最大针数 Max.number of stitches	20,000 针/1个图案 20,000 stitches per pattern
压脚驱动 Work clamp drive	气动驱动方式 Pulse motor drive
压脚高度 Work clamp lift amount	最高.30mm Max.30mm
压脚 work clamp	一体压脚 Unit work clamp
间歇压脚上升量 Height of stepping presser foot	22mm
间歇压脚行程 Stepping presser foot stroke	0或2-10mm ( 出厂设置 : 3mm ) 2 - 4.5mm, 4.5 - 10mm or 0 (Factory setting :3 mm)
扫线装置 Thread wiper	标准装备 Standard equipment
切线装置 Thread trimmer	标准装备 Standard equipment
数据存储方式 Data storage media	USB
马达 Motor	AC伺服马达 550W AC servo motor 550W
气压 Air pressure/consumption	0.5 Mpa 1.7L / min



# ST-8311G/8326G/8342G

## 电子花样机

Direct Drive Programmable Electronic Pattern Sewer with Cylinder Bed



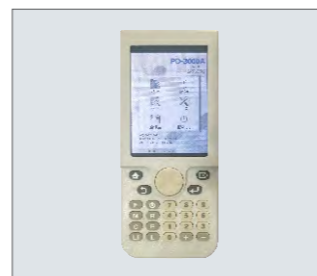
■ 完全按照缝制数据进行美观缝纫  
Sewing data is sewn faithfully and attractively.



■ 通过操作盘可以简单调节各种参数  
Different parameter can be adjusted easily from the operation panel



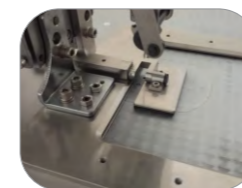
■ 使用简单程序编辑器(选购件)  
Easy-to-use programmer (optional product)



## 规格参数 Specifications

型号 Model	ST-8311G	ST-8326G	ST-8342G
缝制范围(X*Y) Sewing area(X*Y)	最大130*100mm Max.130*100mm	最大200*100mm Max.200*100mm	最大300*200mm Max.300*200mm
使用缝纫机 Sewing machine	平缝花饰缝纫机(2倍旋梭) Lock stitch pattern tacking machines		
线迹 Stitch form	单针平缝 Single needle lock stitch		
最大缝纫速度 Max.sewing speed	2,700 针/分钟 2,700 sti/min		
送布装置 Feed mechanism	间歇送布(脉冲马达驱动) Intermittent feed (pulse motor drive)		
针距 Stitch length	0.05 - 12.7mm		
最大针数 Max.number of stitches	20,000 针/1个图案 20,000 stitches per pattern		
压脚驱动 Work clamp drive	脉冲马达驱动/气动驱动方式 Pulse motor drive/Pneumatic drive	气动驱动方式 Pulse motor drive	气动驱动方式 Pulse motor drive
压脚高度 Work clamp lift amount	脉冲马达驱动Pulse motor drive: 最高Max.25mm 气动驱动方式Pneumatic drive: 最高Max..30mm	最高.30mm Max.30mm	最高.30mm Max.30mm
压脚 work clamp	一体压脚:Unit work clamp 分离式压脚:Separate work clamp	一体压脚:Unit work clamp 分离式压脚:Separate work clamp	一体压脚:Unit work clamp
间歇压脚上升量 Height of stepping presser foot	22mm	19.5mm	22mm
间歇压脚行程 Stepping presser foot stroke	0或2-10mm (出厂设置 : 3mm) 2 - 4.5mm, 4.5 - 10mm or 0 (Factory setting :3 mm)		
旋梭 Hook	旋梭(标准旋梭是选购件) Double-capacity shuttle hook (Standard capacity hook: Option)		
扫线装置 Thread wiper	标准装备 Standard equipment		
切线装置 Thread trimmer	标准装备 Standard equipment		
数据存储方式 Data storage media	闪存(使用CF卡可任意缝制图案), 或者通过打板器使用USB Flash memory (Sewing patterns can be added using CF card), or USD trough LCD Programmer		
马达 Motor	AC伺服马达 550W AC servo motor 550W		
气压 Air pressure/consumption	0.5 Mpa 1.7L / min		

## 选购件 Option Device:



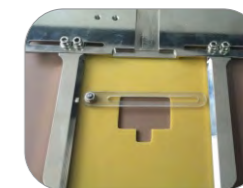
翻转压脚  
Flip Flop for Label



侧滑压脚  
Sliding Presser for Label



简易贴袋  
Patch Pocket



定制模板  
Custom-made



定制模板  
Custom-made



## ST-8311G-CH/8326G-CH/8342G-CH

### 侧滑压脚电子花样机

Pattern Sewing Machine with sliding presser



## ST-8311G-FZ/8326G-FZ/8342G-FZ

### 翻转压脚电子花样机

Pattern Sewing Machine with flip-flop presser



## ST-8342G-XZ

### 细嘴电子花样机

Small Mouth Pattern Sewing Machine



#### 规格参数

#### Specifications

型号 Model	ST-373D
缝制范围(X*Y) Sewing area(X*Y)	最大220*100mm Max.220*100mm
最大缝纫速度 Max.sewing speed	2,700 针/分钟 2,700 sti/min
针距 Stitch length	0.05 - 12.7mm
最大针数 Max.number of stitches	20,000 针/1个图案 20,000 stitches per pattern
间歇压脚上升量 Height of stepping presser foot	22mm
间歇压脚行程 Stepping presser foot stroke	0或2-10mm(出厂设置: 3mm) 2 - 4.5mm, 4.5 - 10mm or 0 (Factory setting :3 mm)





# ST-697-24155

## 垫肩切棉机

Computerized Attaching Shoulder Pads To Armholes And Trimming Edge

# ST-697-15155

## 袖笼机

Computerized Sewing Sleeve Lining Into Armholes (Inserting Wadding Strips)



- 高头结构易于作业  
Postbed construction for easy handing of work pieces
- 下送料，针送料和交替压脚送上料的完美装置  
Fullness distribution by means of bottom feed, needle feed and alternating foot top feed.
- 综合完美控制和缝绉松线装置（可自动或手动）配合不同高质量的要求  
Integrated fullness control and stitch loosening device (manually or automatically engage able) for constantly high quality
- 带多种切边参数的切边机（ST-697-24155）  
Edg trimmer (class ST-697-24144) with various trimming margins available
- 高效率耐用设计  
Robust and durable design

### 规格参数 Specifications

		缝制速度 Stitches/min	面料 Material	标准刀具行程 Knifestroke, standard	可调节刀具行程 Knifestroke adjustable upto					修边器切边 Edge trimmer, trimming margin*
	(mm) U O	(min <sup>-1</sup> )max.		(mm)	(mm)max.	(mm) A B				(mm) 6,4 8,0 10,0
ST-697-15155	6,0 7,0	1,500	MS	4,0-9,0		14 18	•	•		
ST-697-24155	6,0 7,0	1,500	MS	4,0-9,0	18,0	14 18	•	•	•	•

U=下送料/Bottom feed O=上送料/Top feed MS=中厚料/Medium weight to heavy weight material

•=标准设备/Standard equipment \* =每台一切边/One trimming margin is supplied per unit

	额定电压 Normal voltage	功率 Power consumption	重量 Weight, complete		人造线或涤纶线 Synthetic/ Core thread	尺寸(长宽 高) Dimensions (Length,Width, Height)			
	(V),(Hz)	(KVA)	(kg)			(mm)	System	Nm	(mm) C D
ST-697-15155	190-230V, 50/60Hz	1(max.)	100	65/2	80-120	1,060 500 1,700	190R	130	210 140
ST-697-24155	190-230V, 50/60Hz	1(max.)	100	65/2	80-120	1,060 500 1,700	190R	130	210 140



# ST-313 / ST-360

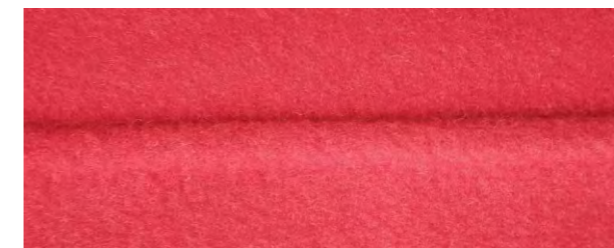
## 双面呢暗缝机

Double Blind Stitch Machine



ST-313主要用于双面呢合缝，独特的暗缝方式，采用独特的卷边设计。

ST-313 is use for double side stitch, it have special blind stitch sewing method and the special double stitching hemming design



ST-360主要用于各种厚料的暗缝加工，采用垂直的送布方式，从而保证了翘摆缝的精度和均匀性。

ST-360 use for different kind of thick material' s blind stitch sewing.The accuracy and evenness of the blind sewing can be under control with the special vertical feeding method .to the pocket. A stacking sensor is also provided as standard to prevent stacking errors.



### 规格参数 Specifications

型号 Model	ST-313	ST-360
缝纫速度 Sewing speed	800-1000 针/分钟 800-1000 stitches/min	
缝线根数 Threda number	2	
针距 Stitch length	一般针距为4针/里面，可调节 Normal stitch is 4 sti/cm, it can adjust	
产量 Produce quantity	500-700米/12小时 500-700 meters per 12 hours	
机油添加 Adding oil	主轴无油，机头手动添加 Main shaft without oil, head is manual oil adding	
机针 Needle	1717dc (格罗茨) 1717dc (groz-beckert)	
控制系统 Control system	琦星/鲍曼克斯/ekfa Qixing / powermax / efka	
电源 Power supply	400w, 220v / 0.4mpa	



# ST-781D

## 直驱平头锁眼机

Direct Drive Lockstitch Button Holer Machine



- 节能无刷直驱电机，节能低噪  
Energy saving direct drive brushless motor, energy saving and low noise
- 同步带传动，调节简单  
Synchronous belt drive, simple adjustment
- 电机抬压脚  
Motor lift presser foot

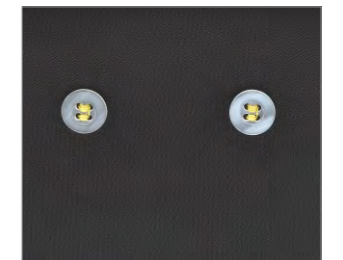
# ST-373D

## 电脑直驱钉扣机

Direct Drive Button Sewing Machine



- 快速适应多种缝制要求，对应缝制的变化，可通过简单的操作进行从4孔到2孔钉扣形式的变更，操作方便、省电、高效率、低噪音、寿命长。  
This machine is able to over the stitching mode between 2 holed and 4 holed buttons according to any design change. Easy operation, low electric consumption, high efficiency, low noise, long life-time.



### 规格参数 Specifications

型号 Model	ST-781D
机针 Needle	DPX5(11#-14#)
锁眼缝长度 Length of keyhole	22mm
套结宽度 Width of bartack	2.5-4mm
压脚高度 Height of Presser foot	12mm
切刀尺寸 Size of cutter	6.4 - 19mm (1/4" - 3/4")
转速 Speed	3600 rpm

### 规格参数 Specifications

型号 Model	ST-373D
机针 Needle	14#-18# TQX1 #16
钮孔直径 Button Diameter	10-28
自动剪线 Automatic Trimmer	X(2.5-6.5) Y(0.25-6.5)
压脚高度 Height of Presser foot	>9
钉缝针数 Number of stitches	8,16,32
转速 Speed	0-1500/min
电压 Voltage	110/220



# ST-103D

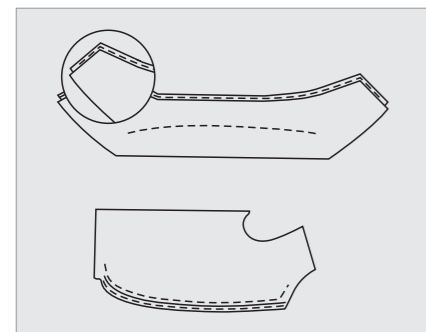
## 直驱门襟切口机

Direct Drive Placket Cutting Machine



用于西服前幅门襟止口  
领襟止口及各类服装止口  
用于不同厚度面料  
此机全自动供油  
标准止口3毫米

Use machine as scissor to improve speed. Different thickness of cloth can be cut out Supplying oil automatically Standard cutting thickness:3mm



ST-103D 自带剪刀功能，专用于切门襟，可大大提高工作效率。

ST-103D Comes with scissors function, dedicated to cutting the placket, Can greatly improve work efficiency.



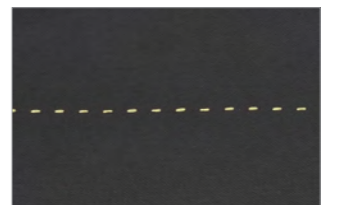
# ST-128D

## 直驱链式珠边机

Direct Drive Chain Shape "Hand-stitch" Machine



- 自动供油系统，工作方便、高效  
Automatic oil supply system, it is convenient to work, high-efficient
- 采用优质部件，机器运转更平稳，噪音小  
Adopting the high-quality part, the machine operates more steady, with low noises
- 油量调节螺钉可对旋梭供油状态进行调节  
The fuel-flow control screw can for the oil state to regulate in fastenning the shuttless loom
- 操作简单、维修方便、运转平稳  
It is simple to operate, maintain it conveniently, it is stable to operate
- 低噪音、低震动、创造了良好的工作环境  
With low noise, low to shake, create the good working environment
- 适用于时装、休闲、软质皮革等中厚料珠边线迹缝纫  
The thick material pearl sideline mark is sewn to suitable for fashion, recreation, soft leather, etc.



### 规格参数 Specifications

	18	18	1.8mm	丝线普通线 Silk thread ordinary line	5	8	5	800	4p 1400
ST-128-1	18	18	1.8mm	丝线普通线 Silk thread ordinary line	5	8	5	800	4p 1400
ST-128-2	18	18	2.1mm	丝线普通线 Silk thread ordinary line	5	8	8	800	4p 1400
ST-128-3	21	21	3.1mm	粗线 Thick line	6	8		800	4p 1400
ST-128-4	21	21	4.0mm	粗线 Thick line	6	8		800	4p 1400